



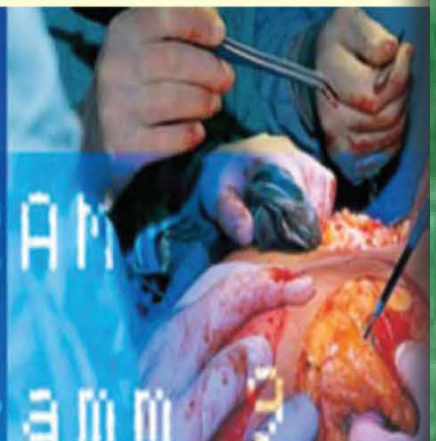
# ESS-TUR

Monopolar / Bipolar  
Electrosurgical generator



OPERATING THEATRE

PROGRAM  
Program





# ESS-TUR

## Monopolar/Bipolar Electrosurgical Generator

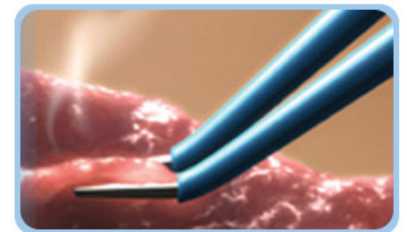


### ES-TUR - Electro Surgical Generator

The device comes with Instant Tissue response technology and Tissue impedance measurement systems. These models offer top of the line features like multiple blend modes, best monopolar cutting and coagulation performance with precision controlled bipolar output and host of safety features.

### Performance Features







- 400W model**  
 ES-TUR is a 400W analog model with cut, blend and coagulation modes for under water surgery.
- Patient Plate Return Electrode Monitoring systems :**  
 Patient Plate Return Electrode Monitoring System provides instant indication of the quality of contact of the patient plate return electrode. Failure or poor contact results in fault indication with sound alarm which substantially reduces the risk of burns under the patient return electrode.
- High power efficiency of 97% :**  
 The power efficiency of the generator leads to multiple benefits like increased reliability, most compact size, high portability, economy and reduced power consumption.



### Technical Specifications :

	Max. Power (Watts)	Rated Load (Ohms)
Operating Frequency	480 KHz	-
Pure Cut	400 W	500
Blend 1	250 W	500
Blend 2	200 W	100
Spray	120 W	500
Fulguration	150 W	500
Desiccation	150 W	500
Bipolar Coagulation	80 W	100
Dimension ( W x H x D )	300 mm x 150 mm x 340 mm	
Weight	5.5 Kg	
Input Voltage	170 to 260 VAC 50 Hz	

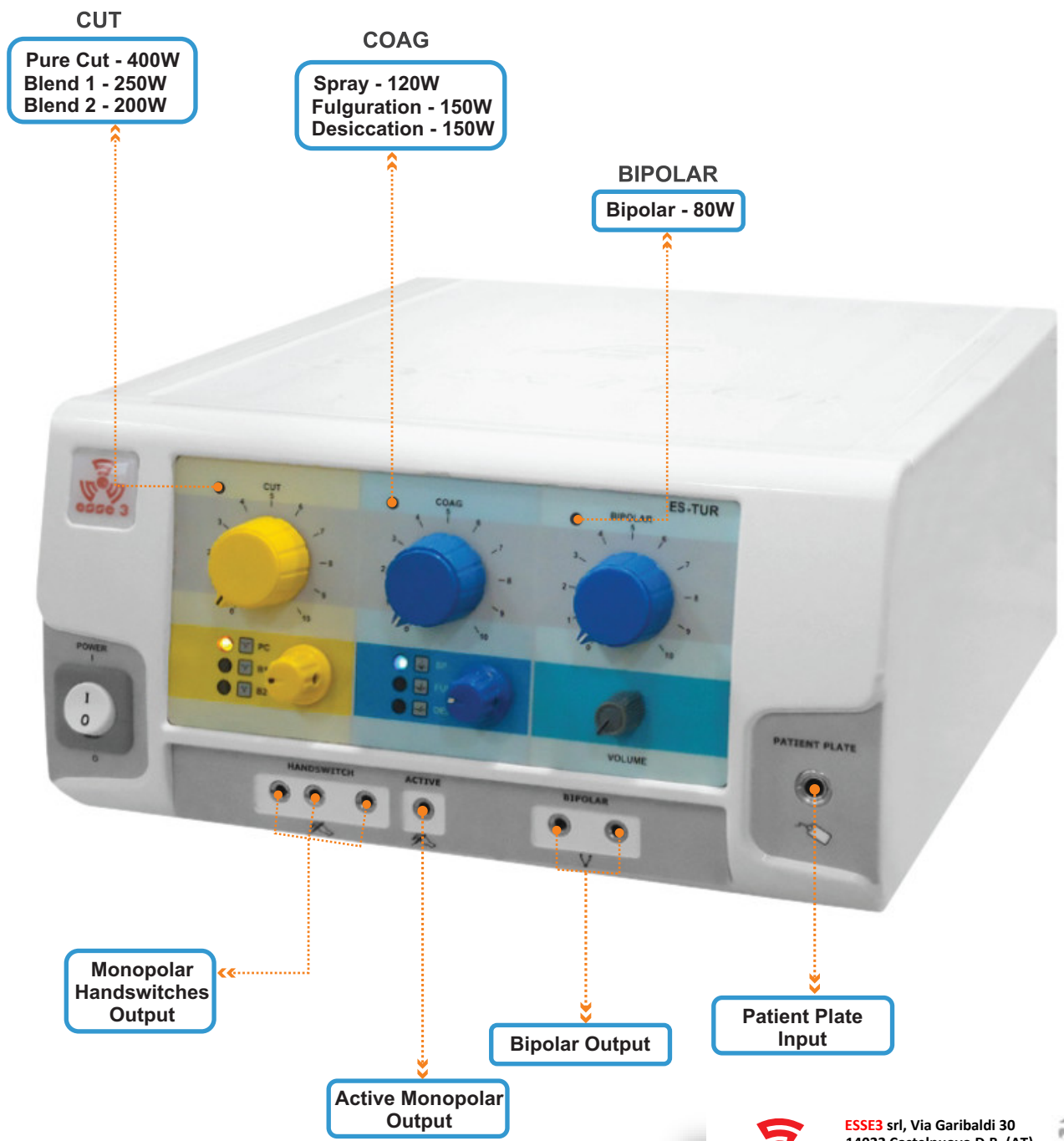
### Standard Accessories :

<p><b>Monopolar Double Pedal Footswitch / Bipolar Single Pedal Footswitch</b></p> 	<p><b>Autoclavable Patient Plate With Cable Cord</b></p> 	<p><b>Silicon Patient Plate ( Optional )</b></p> 
<p><b>Chuk Handle With Electrode Autoclavable</b></p> 	<p><b>Autoclavable Bipolar Forcep With Cable</b></p> 	<p><b>Disposable Hand Switch Pencil Imported</b></p> 





ESS-TUR



 **ESSE3** srl, Via Garibaldi 30  
 14022 Castelnuovo D.B. (AT)  
 Tel +39 011 99 27 706  
 Fax +39 011 99 27 506  
 e-mail [esse3@chierinet.it](mailto:esse3@chierinet.it)  
 web: [www.esse3-medical.com](http://www.esse3-medical.com)

